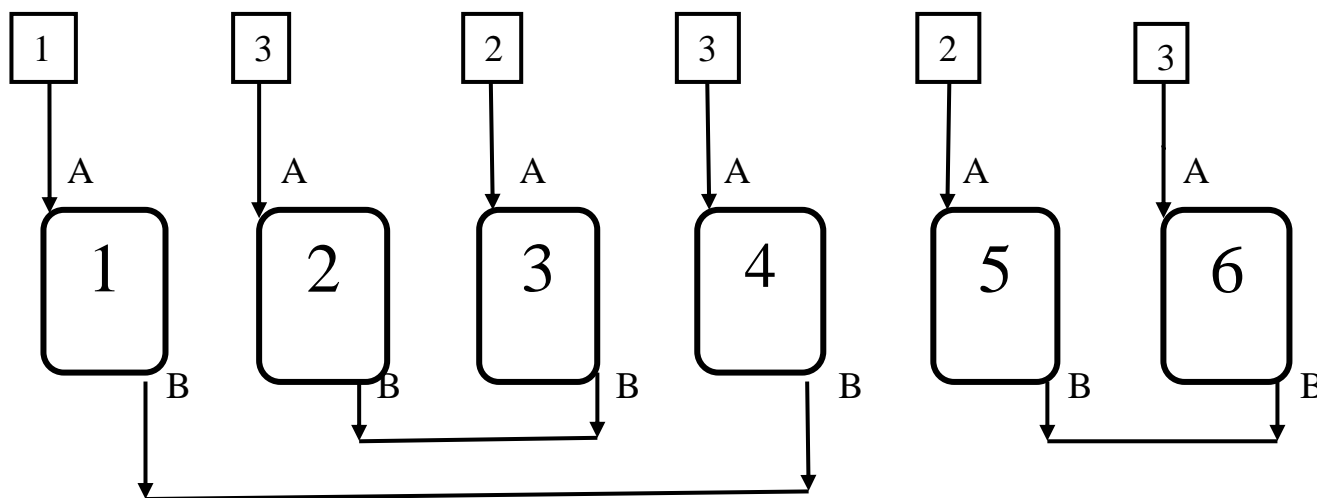
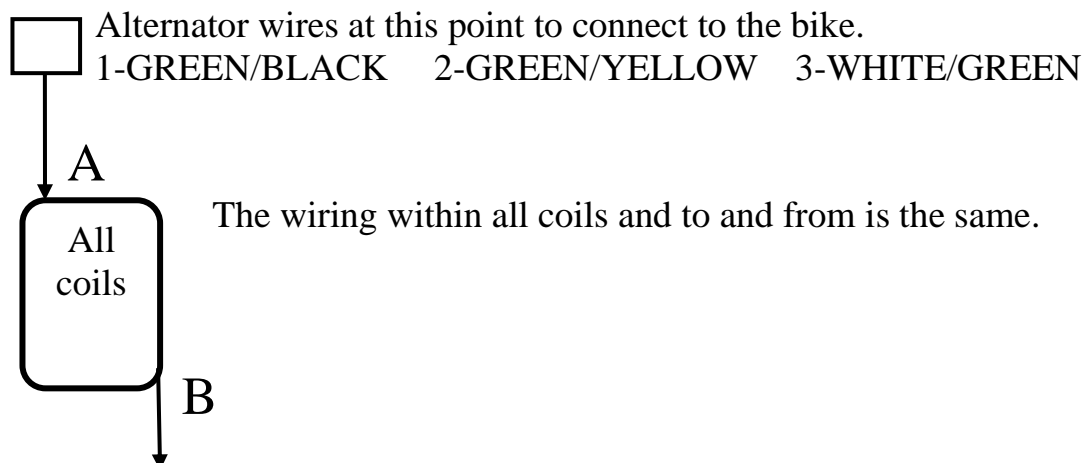


Lucas RM series alternator internal connections RM19 and earlier 6V usage.
 Details obtained from 47127A and 47122A.

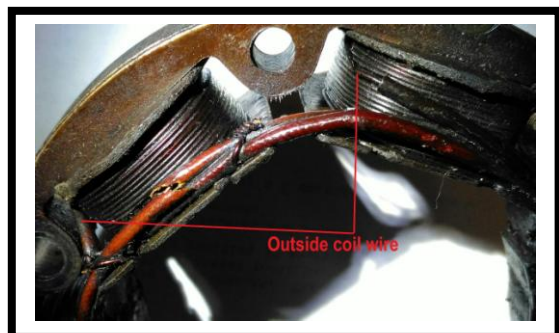


Moving clockwise coil 1 is designated to be to the Right Hand Side of coil 6. The 3 bike connection wires come from this junction.



Alternator internal connection.

Shows the connections coil/coil A



Shows the connections coil/coil B

